

# JUST FOR FUN

## ACTIVITIES

Challenge your knowledge of New Hampshire with these fun games.

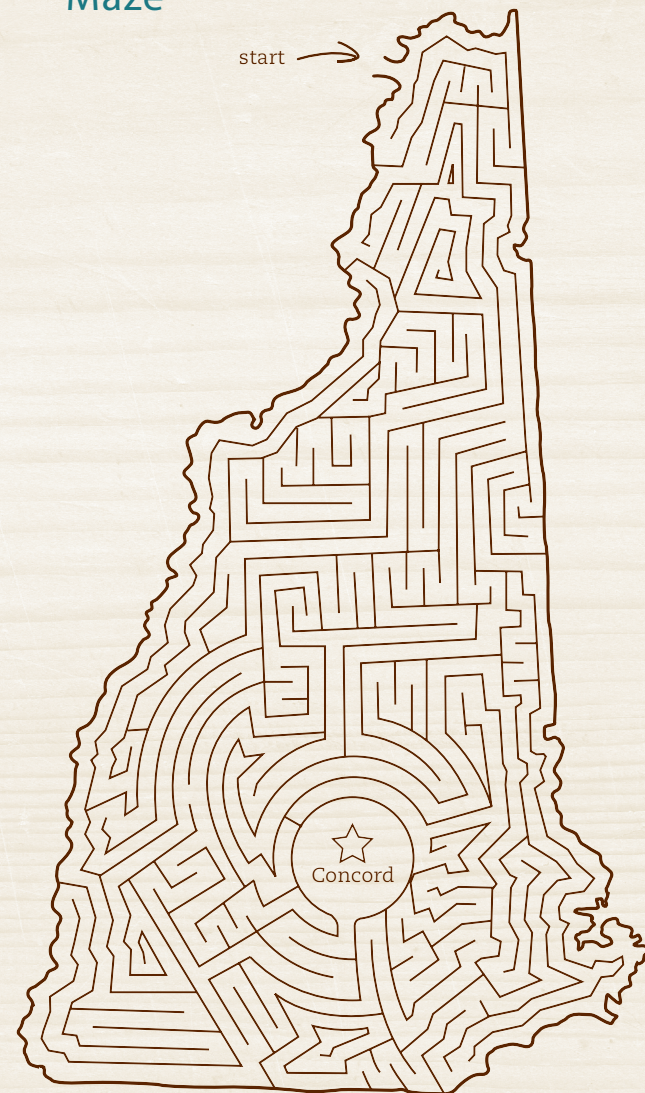
### Word Search



Can you find these words? They go across, down, diagonally and even backwards!

- |                         |           |         |
|-------------------------|-----------|---------|
| New Hampshire Moose     | Snowboard |         |
| Winnepesaukee Mountains | Lakes     |         |
| Atlantic Ocean Forest   | Granite   |         |
| Pumpkin                 | Hiking    | Beaches |
| Wildlife                | Scenery   |         |

### Maze



For more information about New Hampshire, go to: [visitnh.gov/student](http://visitnh.gov/student)

8105

STATE OF NEW HAMPSHIRE DEPARTMENT OF BUSINESS AND ECONOMIC AFFAIRS

Division of Travel and Tourism  
100 Main Street, Suite 100  
Concord, NH 03301



## New Hampshire STUDENT RESOURCE GUIDE



### Welcome to New Hampshire!

Whether you are doing research for a report or planning a vacation with your family, you've picked a great state to learn about! New Hampshire is filled with beautiful places and interesting history.



# STATE SYMBOLS

Did you know that New Hampshire's state fruit is the pumpkin? They even have pumpkin festivals in October to celebrate it!



Seal  
Frigate Raleigh



Emblem  
Old Man of the Mountain



Flag  
State Seal on Blue Background



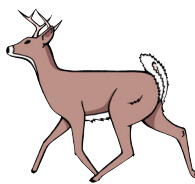
Sport  
Skiing



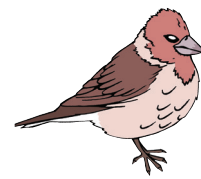
Tree  
White Birch



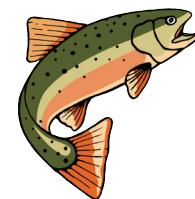
Flower  
Purple Lilac



Animal  
White-tail Deer



Bird  
Purple Finch



Fish  
Brook Trout



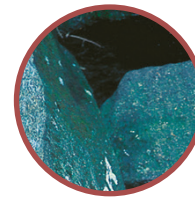
Insect  
Ladybug



Mineral  
Beryl



Gem  
Smoky Quartz



Rock  
Granite



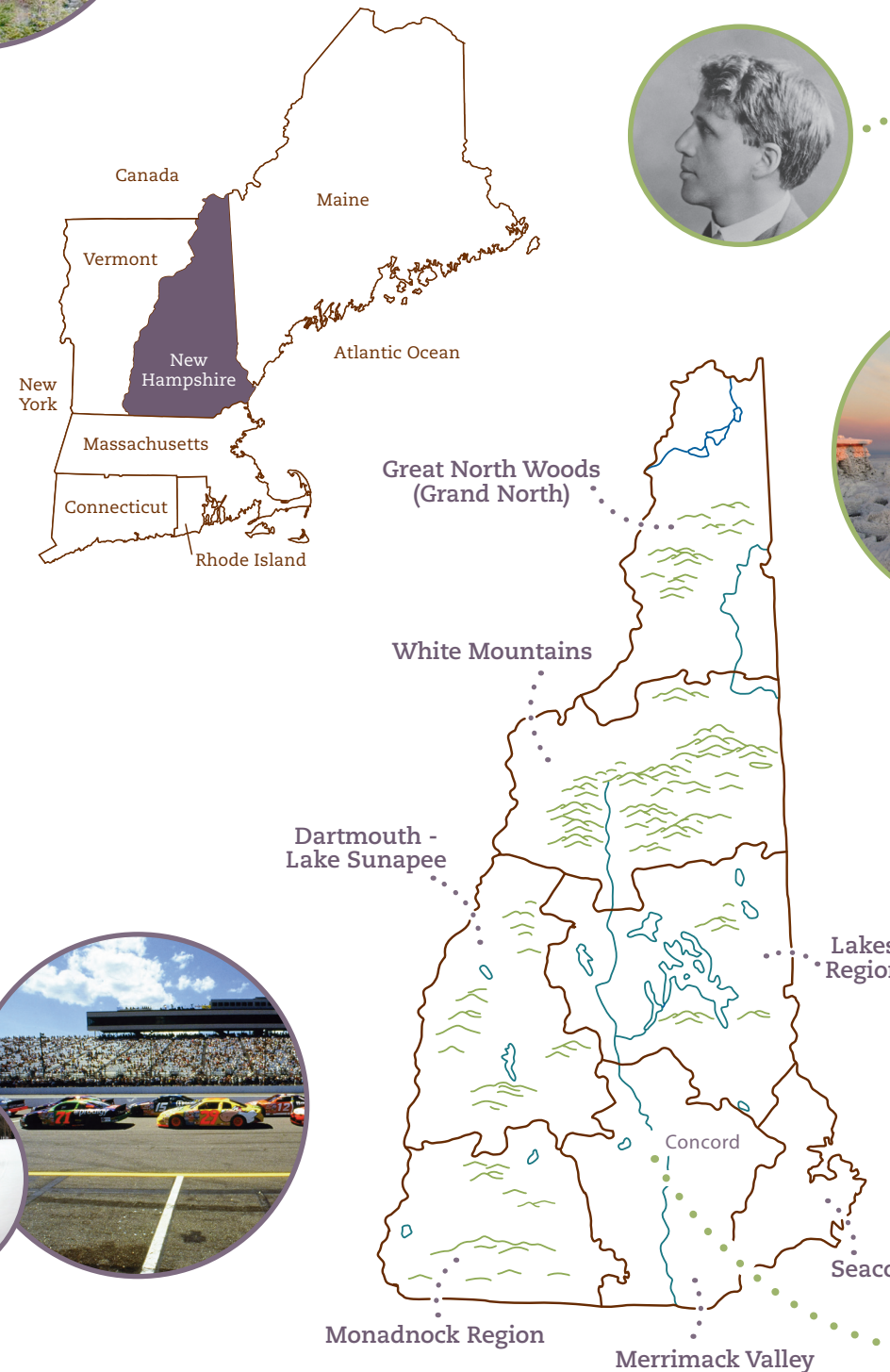
Amphibian  
Red-spotted Newt



Fruit  
Pumpkin

# GEOGRAPHY

New Hampshire is located in the northeastern United States. It is 168 miles long and 90 miles across at its widest point.



# FUN FACTS

Think you know a lot about New Hampshire? Here are some fun and interesting facts you probably didn't know.

New Hampshire's state motto is "Live Free or Die" which was first written by General John Stark during the American Revolutionary War.

Some famous children's books written in New Hampshire are *Little Red Riding Hood*, *Curious George*, and *Pollyanna*. Many famous authors who live(d) in New Hampshire include Joe Hill, Bill Bryson, Dan Brown, Jodi Picoult, J.D. Salinger, Robert Frost and Sarah Joseph Hale; author of "Mary had a Little Lamb."

The 14th President, Franklin Pierce, was from New Hampshire. He was born in Hillsboro in 1804.

New Hampshire's major industries are: textiles, tourism, electronics and computer software. The Amoskeag Mill in Manchester was once the largest textile mill in the world.

Mount Washington is the highest point in the northeastern United States at 6,288 feet above sea level.

Famous actors and actresses from New Hampshire include Adam Sandler, Sarah Silverman, Mandy Moore, Seth Meyers and Mike O' Malley.

The first American to travel in space was Alan Shepard, born in East Derry, New Hampshire. The first private citizen to travel in space was Christa McAuliffe; a teacher from Concord.

Some well-known New Hampshire based businesses headquartered in New Hampshire include: Stonyfield Farm, Lindt Chocolate USA, The Timberland Company, and Fischer Sports USA.

According to the US Census, New Hampshire had a 2022 population of approximately 1,395,231.

The state capital city of New Hampshire is Concord.

For more information about New Hampshire, go to: [visitnh.gov/student](http://visitnh.gov/student)

# HISTORY

New Hampshire's history is an exciting tale. The state was populated by Native American tribes for thousands of years before being settled by the British in 1623.

**1623** The first known European settlement in New Hampshire was founded in Piscataqua by David Thomson.

**1679** England formed New Hampshire as a separate royal colony and named it after Hampshire, England.

**1767** Wolfeboro, the summer home of Royal Governor John Wentworth, became the first summer resort in America.

**1769** Dartmouth College was founded in Hanover, New Hampshire.

**1775** New Hampshire became the first state to declare its independence from England.

**1788** New Hampshire was the 9th state to ratify the Constitution of the United States. With this ratification, the Constitution officially went into effect.

**1808** The state capital was established in Concord. New Hampshire is home to the nation's oldest legislative building in which the House and Senate still meet.

**1853** Franklin Pierce of Hillsboro, New Hampshire, became the 14th U.S. President.

**1869** The mountain climbing cog railroad began operation at Mt. Washington. It is still in operation today.

**1923** The University of New Hampshire was established in Durham.

**1952** New Hampshire held the First-in-the-Nation Presidential Primary and citizens began voting directly for presidential candidates.

**2003** The Old Man of the Mountain, the granite profile that serves as the symbol of the state, fell from its perch atop Profile Mountain in Franconia Notch State Park.

